



BIG BEAR POWER

GX COMMERCIAL LLC

4301 S VALLEY VIEW BLVD. STE 10 AND 11

LAS VEGAS, NV 89103

725-274-6171

BBG107 ASSEMBLY OPERATION MAINTENANCE MANUAL



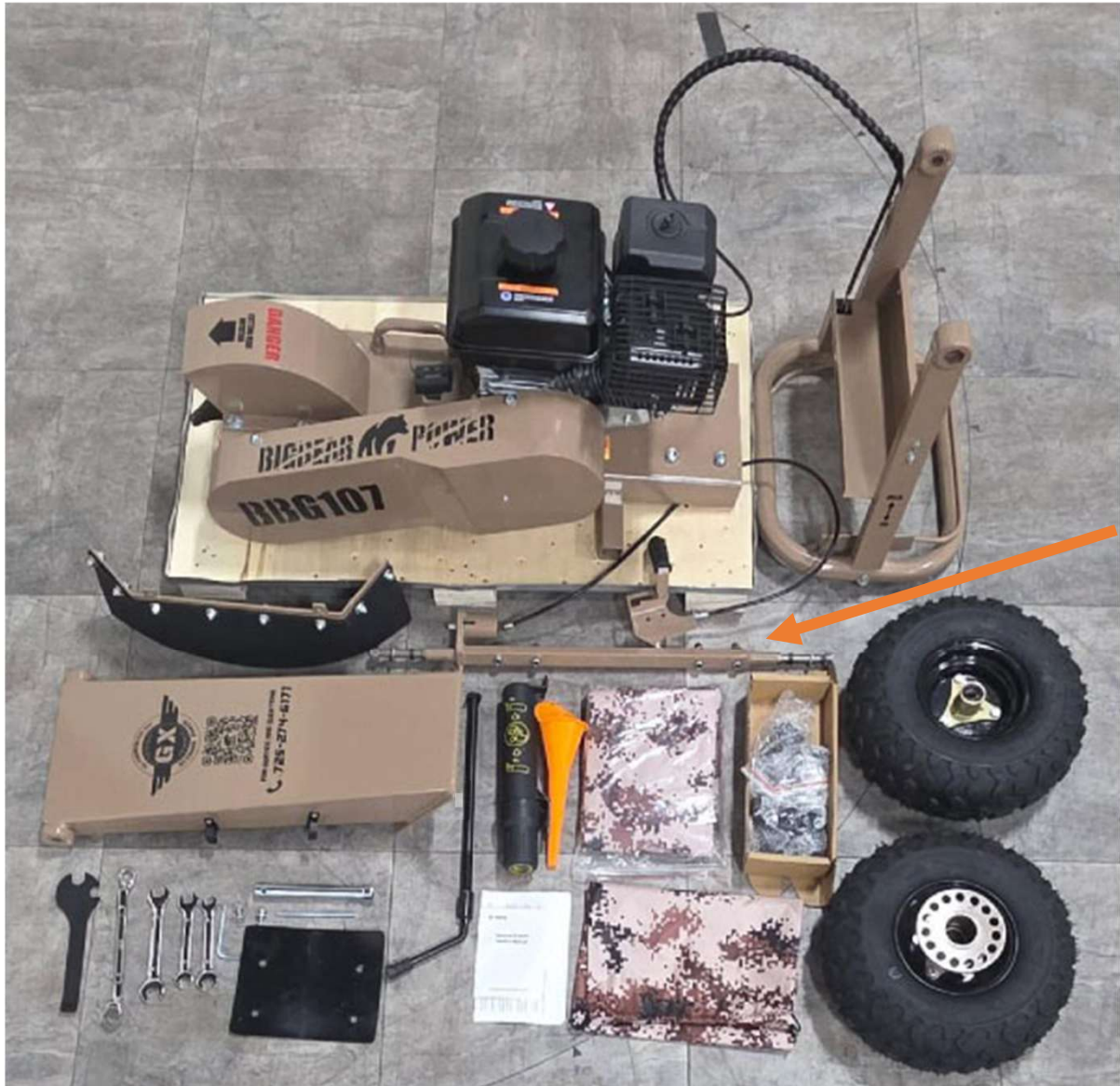
REVISED 12/3/25

STEP 1

PART INSPECTION

1. REMOVE THE TOP AND SIDES AND PARTS FROM THE CRATE
2. UNPACK ALL PARTS AND CHECK THAT YOU HAVE EVERYTHING.
3. MISSING PARTS? CALL 725-274-6171 GX COMMERCIAL PARTS DEPT

ENGINE & CHASSIS



HANDLE
ASSEMBLY

Axle
assembly

PIVOT TIRE

BRAKE TIRE

CHIP GUARD

TOWER

Tools

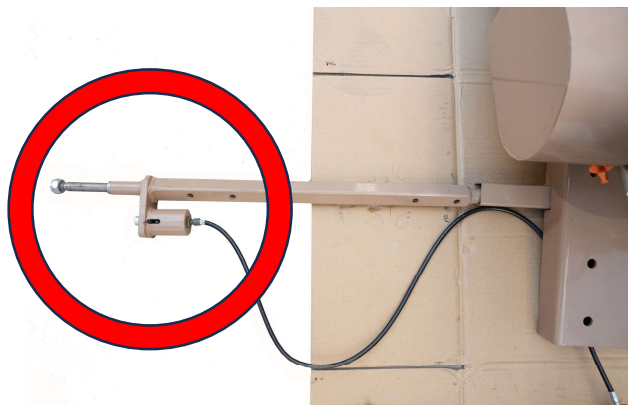
Tower pad

Manual, cover, tool bag,
teeth, funnel, manual tube

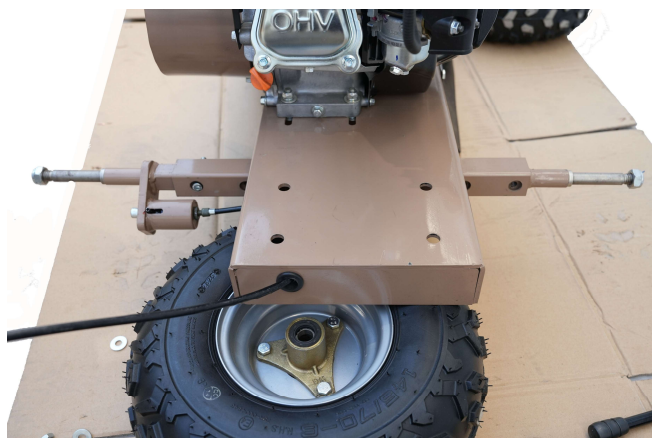
STEP 2

INSTALL AXLE

1. **INSERT THE AXLE AS SHOWN WITH BRAKE PIN DRUM ON ROADSIDE**
2. **SUPPORT THE FRAME WITH THE TIRE SHOWN**
3. **DOUBLE CHECK THE BRAKE PIN LOCATION**
4. **ASSEMBLE WITH THE PROVIDED HARDWARE AND SECURE THE AXLE**



1



2



3



4

MISSING PARTS? CALL 725-274-6171 GX COMMERCIAL PARTS DEPT

STEP 3

INSTALL CHIP GUARD

1. **LOCATE THE UNDER-CARRIAGE CHIP GUARD AND PREPARE THE HARDWARE**
2. **TILT THE MACHINE UP AND MOUNT THE GUARD AS SHOWN**
3. **TIGHTEN ALL HARDWARE**

1



2



3



MISSING PARTS? CALL 725-274-6171 GX COMMERCIAL PARTS DEPT

STEP 4

INSTALL BRAKE WHEEL

1. **INSTALL THE BRAKE WHEEL AS SHOWN TO THE AXLE**
2. **TIGHTEN THE HARDWARE WITH THE WHEEL SPINNING FREELY**
3. **INSTALL THE CURBSIDE WHEEL**

1



2



METAL SLEEVE

WASHER

NUT

3



MISSING PARTS? CALL 725-274-6171 GX COMMERCIAL PARTS DEPT

STEP 5

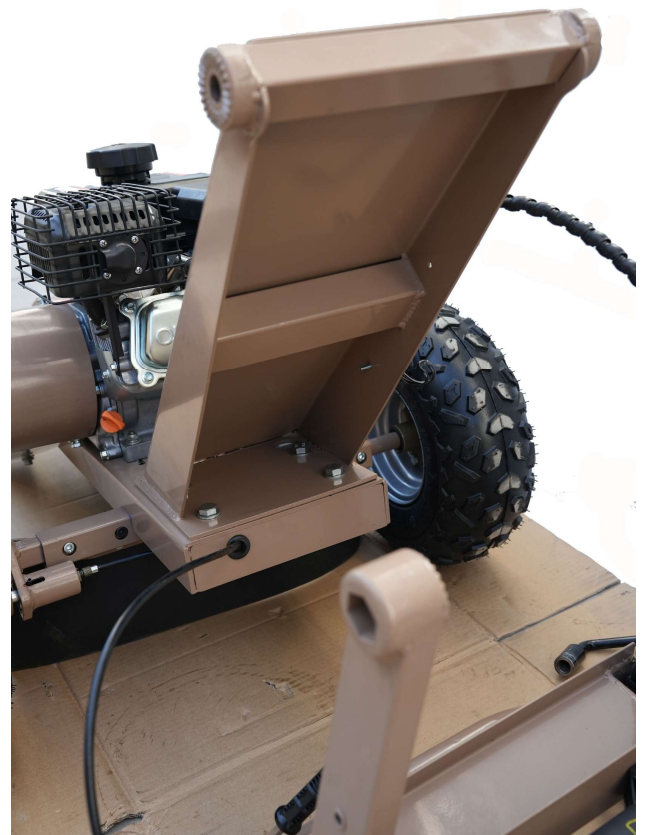
INSTALL HANDLE TOWER

1. **INSTALL HANDLE TOWER AND RUBBER PAD WITH HARDWARE PROVIDED**
2. **TIGHTEN ALL HARDWARE.**

1



2



Please ensure that you place the rubber vibration pad underneath the tower during the installation process.

MISSING PARTS? CALL 725-274-6171 GX COMMERCIAL PARTS DEPT

STEP 6

INSTALL THE BOW HANDLE

1. **FIT THE HANDLE INTO POSITION**
2. **A RUBBER Mallet MAY BE NEEDED TO ENGAGE THE GEAR TEETH**
3. **INSERT THE LONG BOLT**
4. **TIGHTEN THE ADJUSTMENT HANDLE**
5. **SECURE THE WIRING HARNESS TO THE TOWER WITH THE CLAMPS**

1



2



3



4



5



MISSING PARTS? CALL 725-274-6171 GX COMMERCIAL PARTS DEPT

STEP 7

INSTALL BRAKE CONTROL

1. **ALIGN THE BRAKE CONTROL ON THE HANDLE**
2. **SECURE WITH HARDWARE PROVIDED**

1



2



MISSING PARTS? CALL 725-274-6171 GX COMMERCIAL PARTS DEPT

STEP 8

ADDING GAS AND OIL

Your stump grinder has low oil protection.
Will not start if the oil is too low, and will
protect the engine



MISSING PARTS? CALL 725-274-6171 GX COMMERCIAL PARTS DEPT

1. Wear protective clothing, face, ear, eye and glove protection at all times
2. Check the safety bar shutoff on every use to ensure your safety
3. Always stay clear of the cutter head, even when the machine is off; the teeth can be hazardous if you're not paying attention. (Aka ankle biter)
4. Other persons in the area should be clear of the machine when running
5. DO NOT GRIND UNDER THE INFLUENCE OF ALCOHOL OR DRUGS
6. Machine is designed for stumps and root systems only.
7. Make sure there are no underground utilities where you are grinding.
8. Stumps were once young trees that may have grown over landscaping rocks or decorative bricks over time. Be aware that you might find these and remove them before continuing to grind. Also, watch for nails that may have been inserted to kill the tree.
9. Always stand behind the machine when the engine is running.
10. If you need to shut down the grinder during operation, simply release the safety bar, and the engine will shut off.
11. Remember, the muffler is hot, don't lay your gloves on the muffler.
12. If the machine is shaking, you might have a broken tooth. Shut it down immediately and inspect it.
13. Before you store your grinder, drain the gas, run it dry, and then place cardboard under the teeth to protect them from concrete chipping.
14. Check all hardware regularly as vibration may loosen hardware
- 15. NEVER START WITH CUTTER TEETH ON HARD SURFACES. START ENGINE WITH TEETH ON YARD AND FOREST GROUND ONLY.**

MISSING PARTS? CALL 725-274-6171 GX COMMERCIAL PARTS DEPT

STARTING THE MACHINE

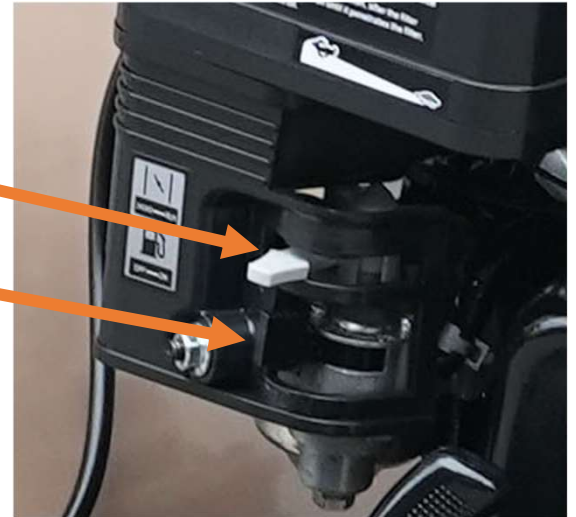
Great! Are you ready to start your engine? Before you do, please ensure that you've reviewed all the operations and safety guidelines on the previous page. If you haven't read them yet, take a moment to do so now. Let's get started safely! Make sure your oil level is full and that you have enough gas.

1. Turn the engine switch to ON



2. CHOKE IF COLD – turn off when starts

3. GAS ON



4. Set the throttle to low speed

Note: use the center screw to keep throttle tight.

5. Stand at the handle, holding the safety bar with your left hand, and pull the start cord with your right hand. The engine won't start without the safety bar engaged, and it's best to raise the ground teeth before starting. Turn choke off after starting.



6. Increase the throttle to engage the clutch and the teeth. Always run at FULL THROTTLE.

OPERATION INSTRUCTIONS

The design of the cutters and horsepower is engineered to enhance grinder performance. This method shown saves both time and effort.

Start on top, pulling Bear Claw back

Continue the backward cut



Grind side to side to remove the Bear Claw cut – Repeat steps 1-4

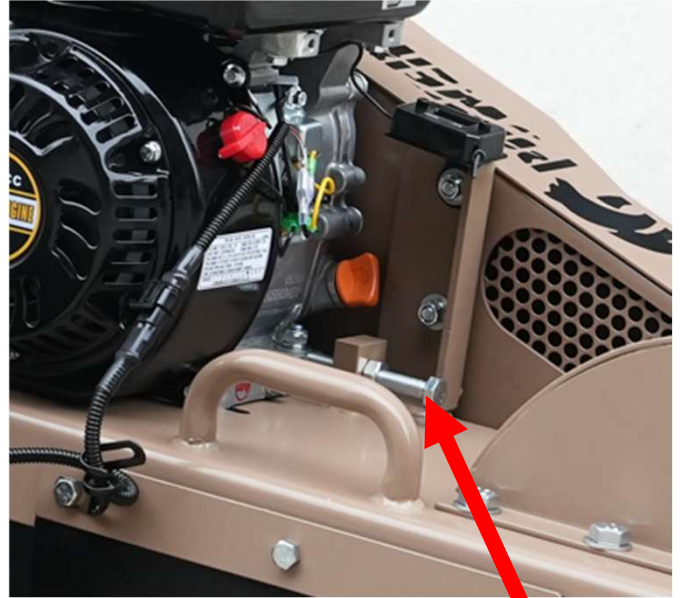
DRIVE BELT TENSION

1



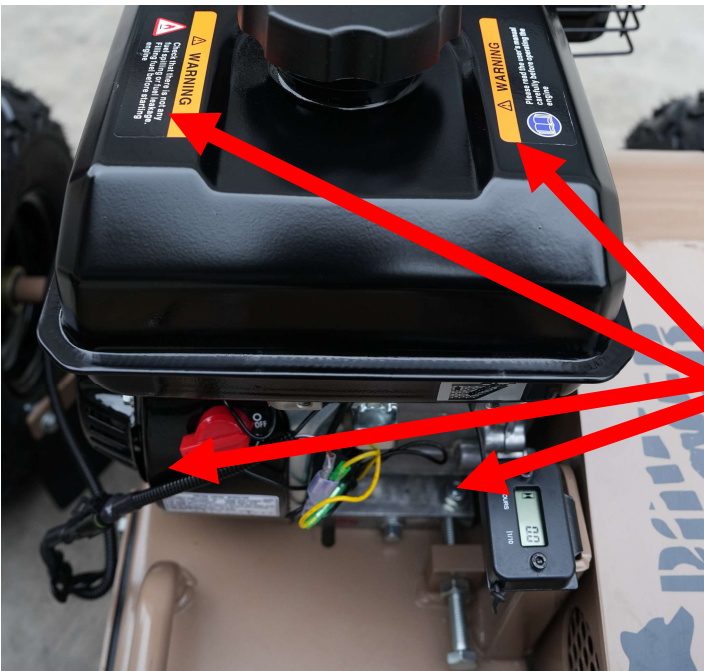
Inspect pulley bolts, use blue loctite

2



Loosen the 4 engine mounting bolts and turn the adjuster bolt CCW to move the engine back and tighten the belts.

3

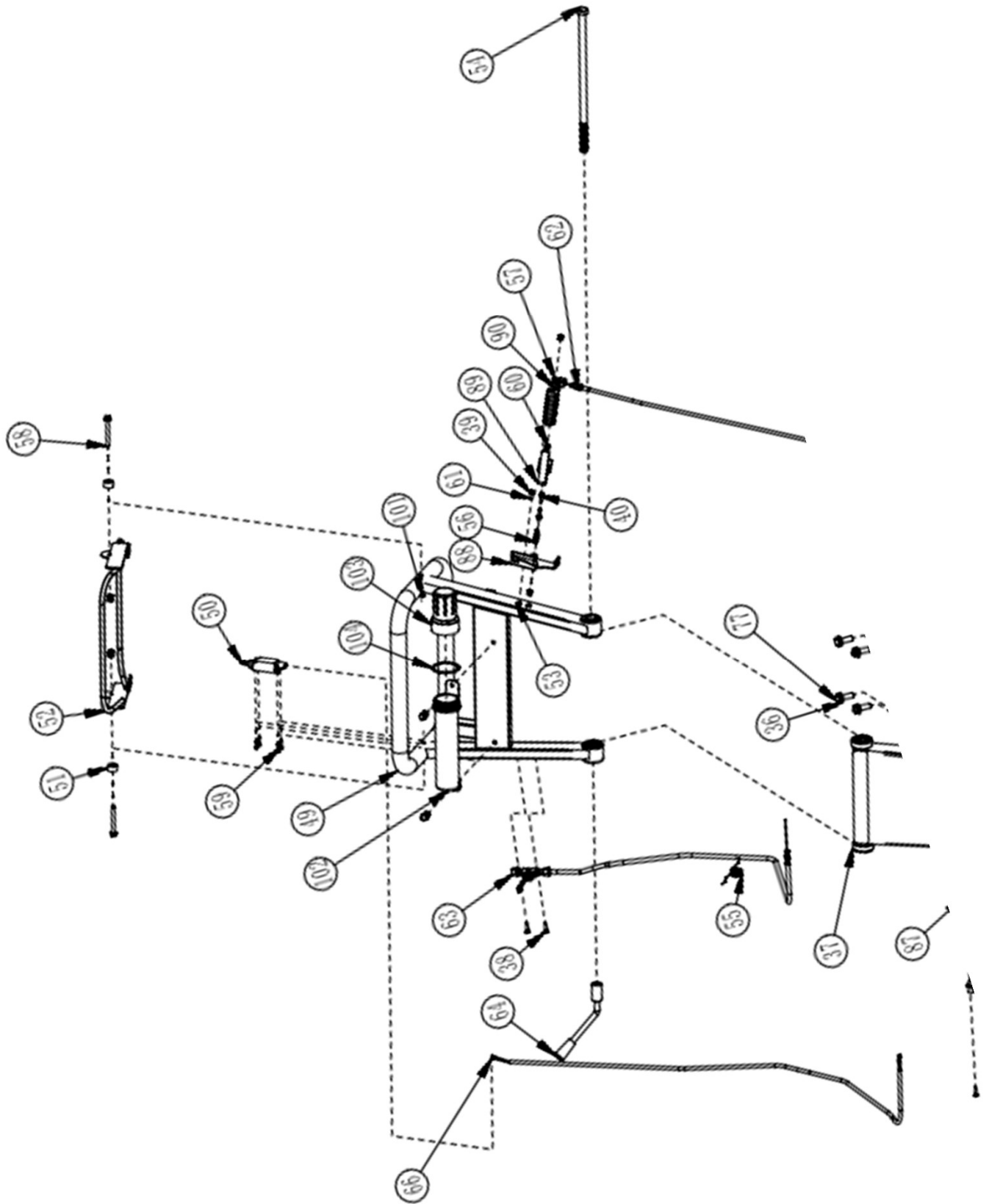


Tighten the 4 engine mounting bolts, and the lock nut on the adjuster bolt.

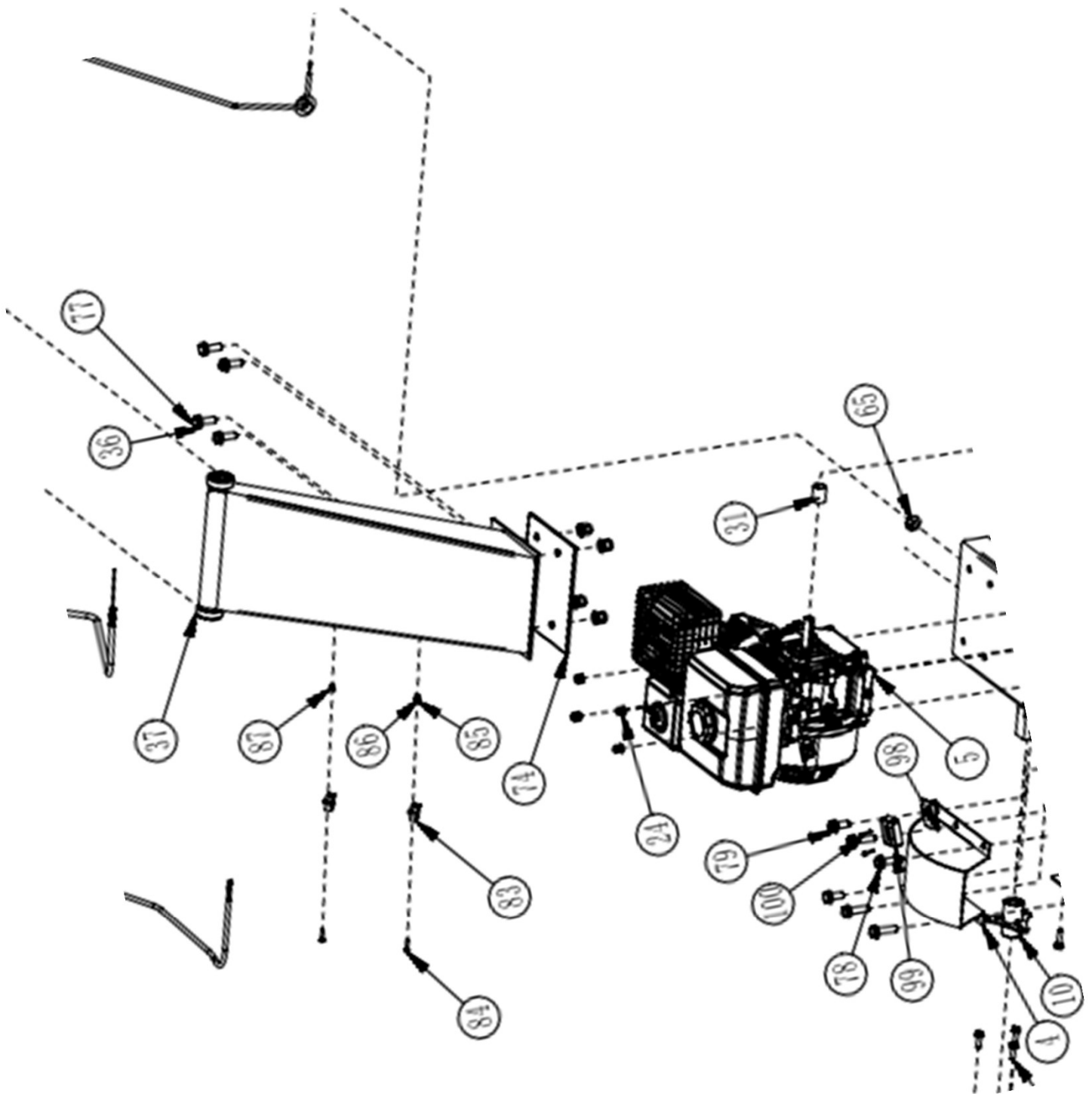
BBG107 PARTS LIST

NO	PART NAME	QTY		NO	PART NAME	QTY
1	Base Frame	1		53	Rivet nut M6	4
2	Belt inner plate	1		54	Bolt M16*360	1
3	Belt cover	1		55	torsional spring	1
4	Blade cover	1		56	Brake cable handle fixing block	1
5	Engine R210 EPA	1		57	Brake cable	1
6	Clutch	1		58	Bolt M8*70	2
7	Belt	2		59	Bolt M5*16	4
8	Left flange	1		60	Lock nut M6	3
9	Tire	2		61	Bolt M6*16	2
10	Right flange	1		62	Nut M8	2
11	Bearing	4		63	throttle valve	1
12	sealring 32	4		64	Handle M16	1
13	Washer M16	2		65	Rubber ring for wire protection	1
14	Lock Nut M14	2		66	Switch line	1
15	Side mudguard pressure strip	1		67	Blade plate pulley spacer	1
16	Rear mudguard	1		68	Key 4.78*4.78	1
17	SIDE MUDGUARD	1		69	Key 8*7	1
18	Brake caliper	1		70	Bearing seat P205	2
19	Brake pin	1		71	compression spring inside the sleeve	1
20	Brake cable limit plate	1		73	Brake pin fixing sleeve	1
21	Bolt M8*25	8		74	shock-absorbing pad down handle	1
22	Washer M8	52		75	Bolt M8*20	1
23	Sping 8	30		76	Bolt M10*40	12
24	Lock Nut M8	28		77	Bolt M12*35	4
25	Bolt M8*30	14		78	Bolt M12*45	4
26	elastic cylindrical pin	1		79	Bolt M12*30	2
27	Bolt M10*70	1		80	square neck bolt M8*45	4
28	Nut M10	1		81	Flange outer sleeve	2
29	Spring 12	10		82	Inner spacer sleeve of flange bearing	2
30	Lock nut M12	10		83	Wiring fixing base	2
31	Clutch inner spacer	1		84	H-type cross groove disc head screw	2
32	Washer M8	2		85	Washer M5	2
33	Bolt M8*50	1		86	Lock nut M5	2
34	Bolt M8*20	4		87	Spring 5	2
35	Clutch out spacer	1		88	Brake cable fixing seat	1
36	Washer M12	20		89	Brake cable handle rod	1
37	Upper Handle	1		90	Plastic sleeve for brake handle	1
38	Bolt M6*20	3		91	Bolt M8*45	2
39	Sping 6	2		92	compression spring of pin	1
40	Washer M6	6		93	Axle welding	1
41	Blade plate	1		94	Rear mudguard fixing plate	1
42	Blade plate pulley	1		95	Brake cable handle rod	8
43	Washer M10	12		96	Bolt M8*50	2
44	Spring 10	12		97	Brake cable adjustment screw	1
45	Lock Nut M10	12		98	Timer fixing plate	1
46	Middle blade	2		99	Hour meter	1
47	Left blade	2		100	Bolt M4*20	2
48	Right blade	2		101	plastic spacer	1
49	Upper Handle	1		102	small tool cup	1
50	Switch	1		103	small tool cup	1
51	Emergency stop switch fixed spacer	2		104	Tool cup gasket	1
52	Emergency stop switch frame	1				

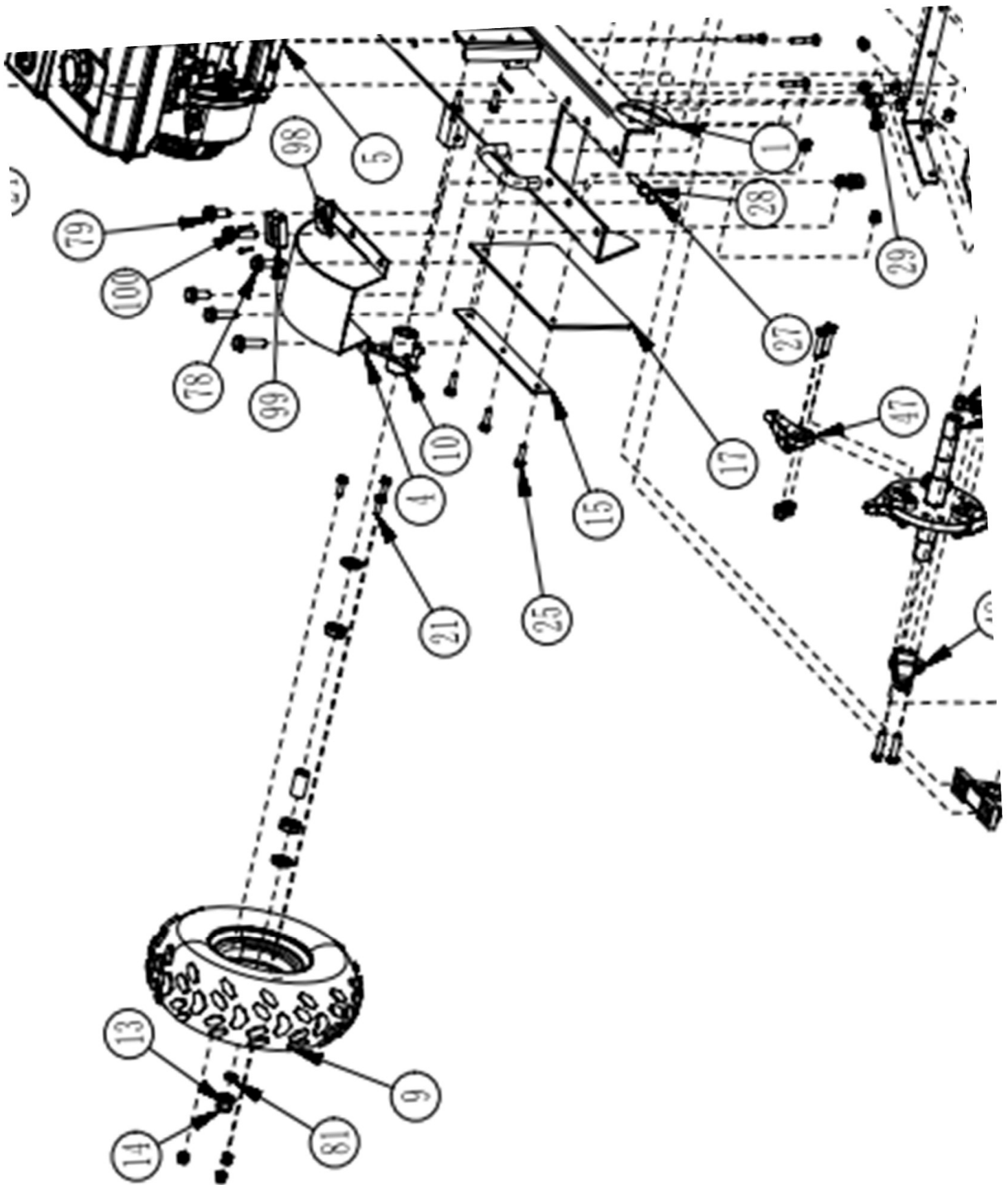
BBG107 PARTS DRAWING



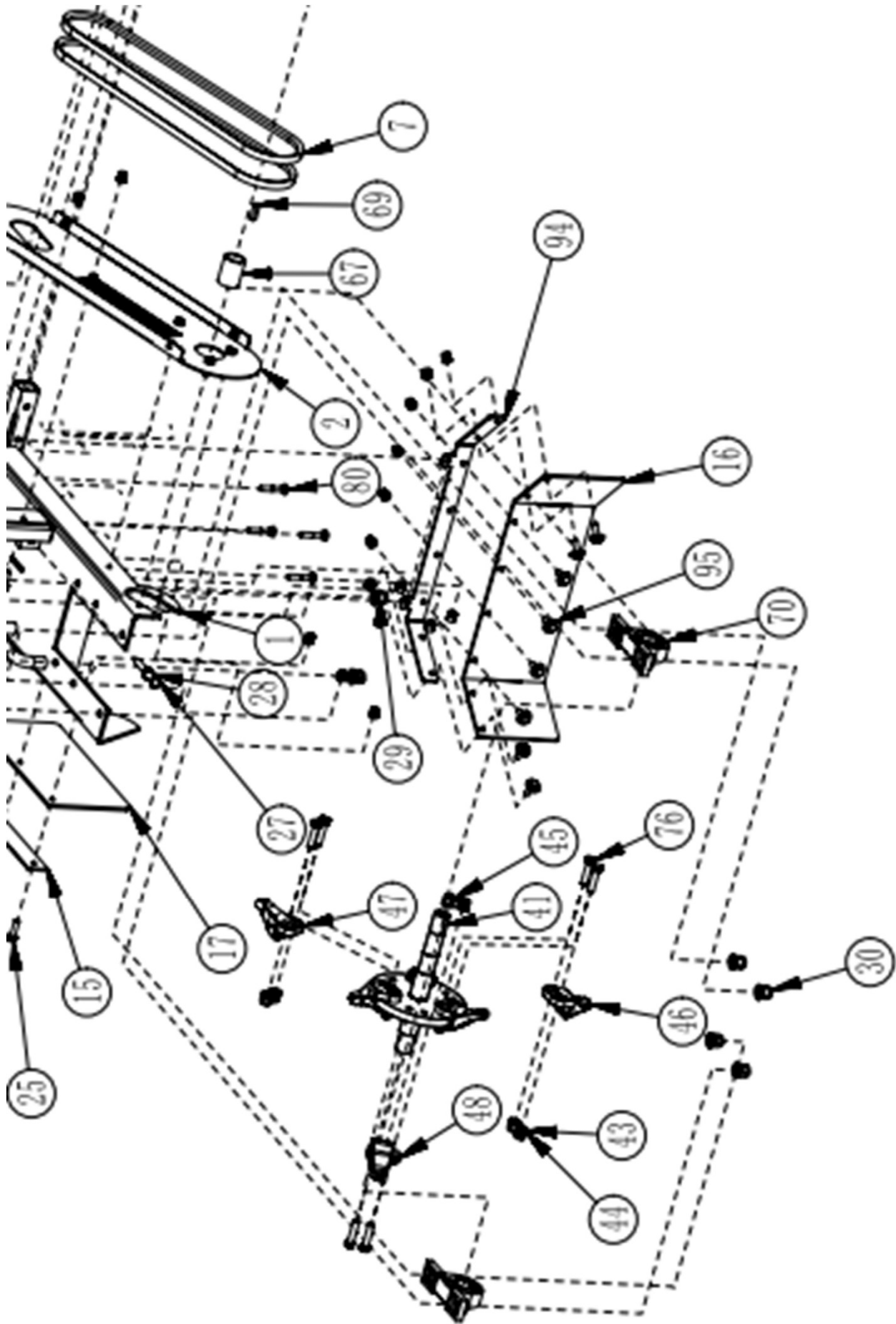
BBG107 PARTS DRAWING



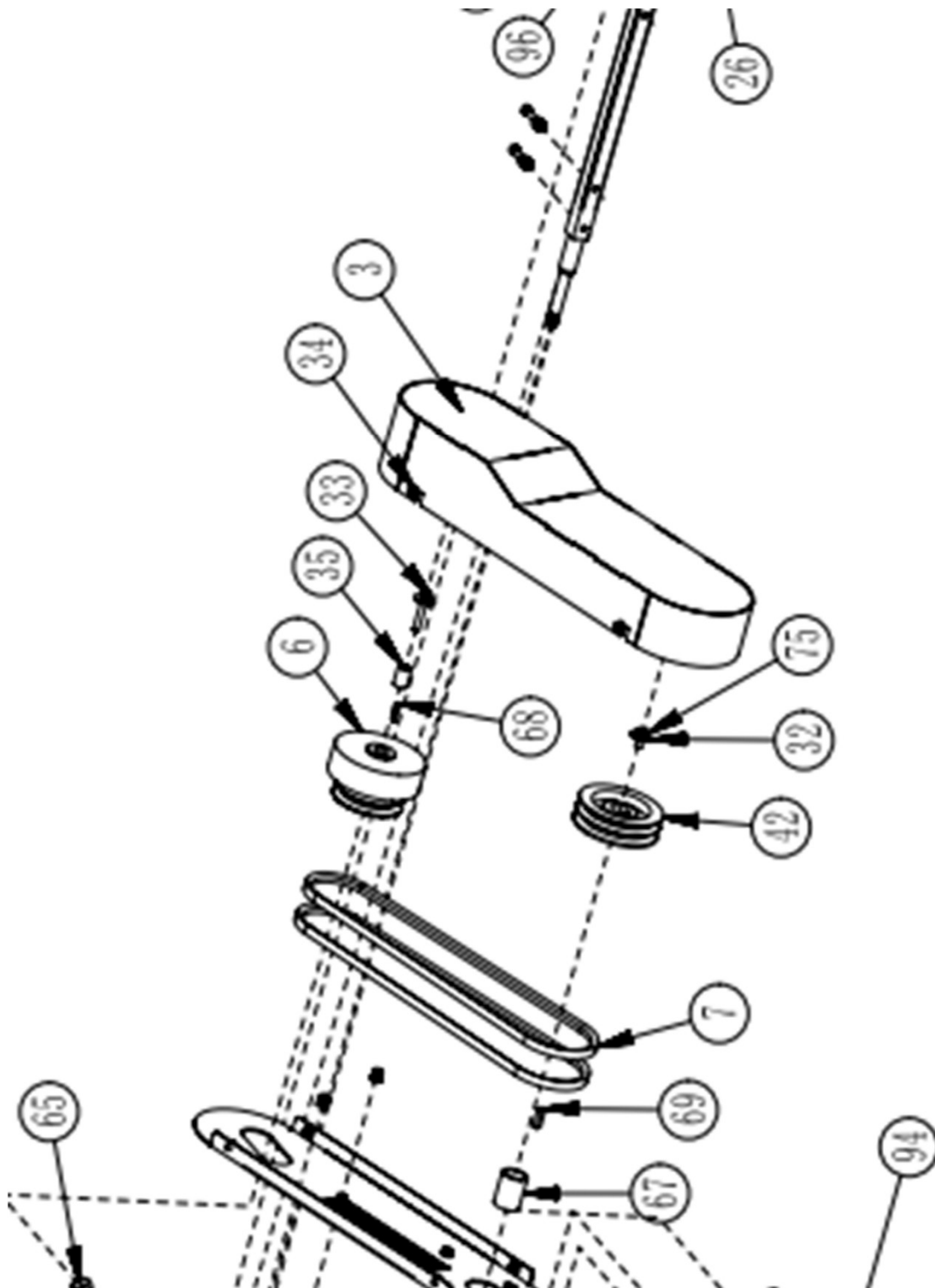
BBG107 PARTS DRAWING



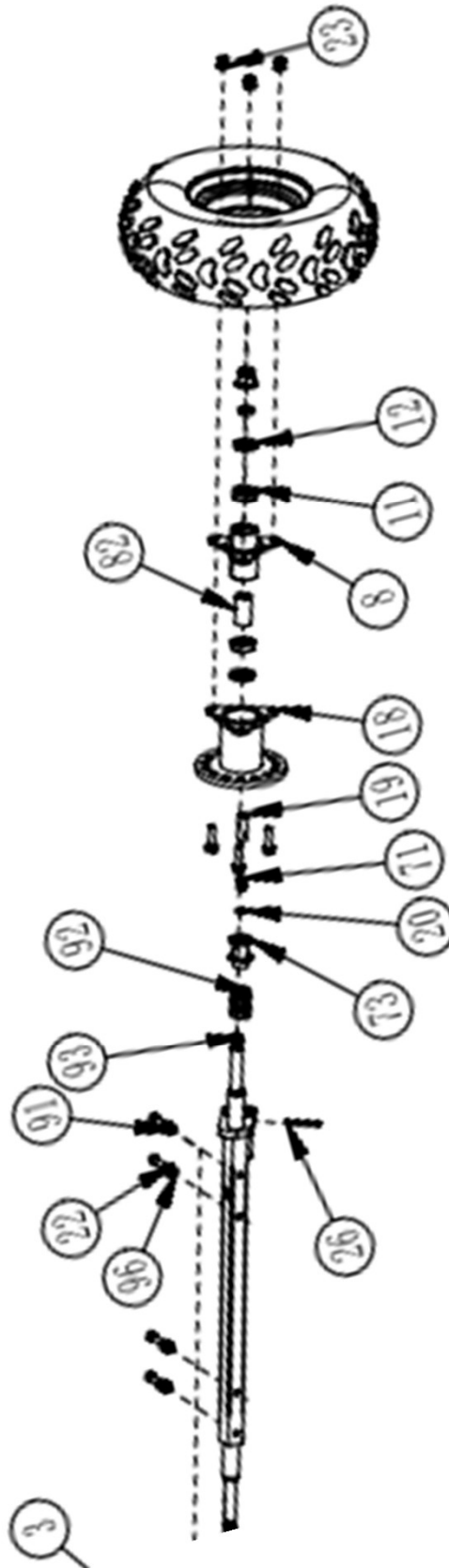
BBG107 PARTS DRAWING



BBG107 PARTS DRAWING



BBG107 PARTS DRAWING





GX COMMERCIAL LLC
4301 S VALLEY VIEW BLVD, STE 10-11-12
LAS VEGAS, NV 89103

EXTENDED 5-YR LIMITED GAS-POWERED WARRANTY

Engines: Rato engines are 1 year warranty, a 4-year OEM commercial extended warranty is included at no extra cost. GX Commercial LLC will provide parts or replace Rato engines at our choice for **5 years from purchase date** at no cost to the original owner with proof of purchase receipt. The warranty is not transferable. All other engine brands are covered under their original OEM warranty.

Chassis: GX Commercial LLC will provide replacement parts to the original purchaser for 5 years for defective chassis components.

Not Covered under this warranty for Gas powered equipment: Tires, Cutting Blades, Cutting Teeth, Labor, Anvils, Belts, Hardware, 12V Batteries, wiring, damage, misuse, accessories, accepted shipping damage including minor scratch and dent.

EXTENDED HANDHELD ELECTRIC POWERED 2-YR LIMITED WARRANTY

Lithium handheld tools come with a 1-year warranty, plus a 1-year GX Commercial LLC extended warranty. GX Commercial LLC will provide parts or replace tools of our choice for **2 years from purchase date** to the original owner with proof of purchase receipt.

Not Covered under this warranty for Gas powered equipment: Tires, Cutting Blades, Cutting Teeth, Labor, Anvils, Belts, Hardware, Batteries, chargers, damage, misuse, accessories, accepted shipping damage, Products provided at no additional cost during marketing promotion giveaways are not covered.

Customer Service 725-274-6171 EXTENSION 1 PST 9-4 or WWW.GXcommercial.com

Revised 11-16-2025