



BIG BEAR POWER

GX COMMERCIAL LLC

4301 S VALLEY VIEW BLVD. STE 10 AND 11

LAS VEGAS, NV 89103

725-274-6171

BBS434

ASSEMBLY MANUAL



REVISED 11-25-25

STEP 1

PART INSPECTION

1. REMOVE THE TOP AND SIDES AND PARTS FROM THE CRATE
2. UNPACK ALL PARTS (**LEAVE THE MAIN I-BEAM ASSY ON THE PALLET**)
3. CHECK THAT YOU HAVE EVERYTHING.
4. MISSING PARTS? CALL 725-274-6171 EXT 1 GX COMMERCIAL PARTS DEPT



STEP 2

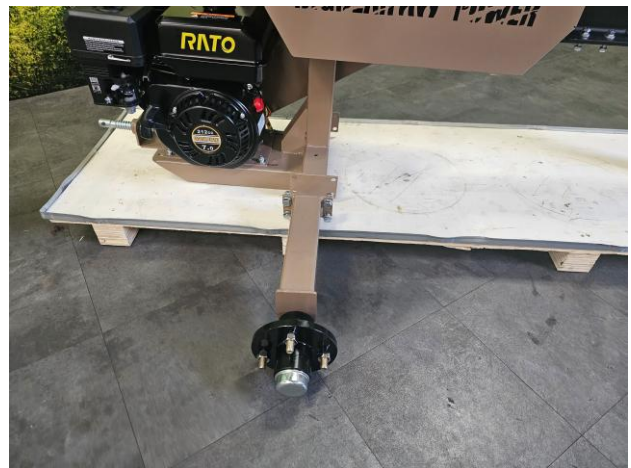
INSTALL AXLES

1. LEAVE THE MACHINE ON THE CRATE PALLET
2. INSTALL THE AXLE AS SHOWN ON THE CURBSIDE
3. INSTALL THE AXLE AS SHOWN ON THE ROADSIDE

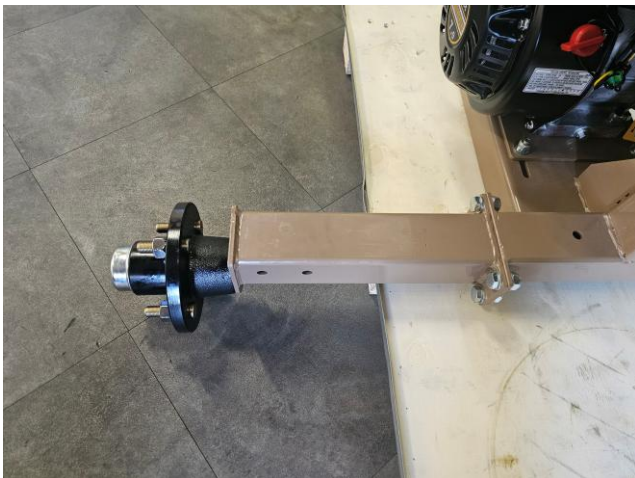
1



2



3



4



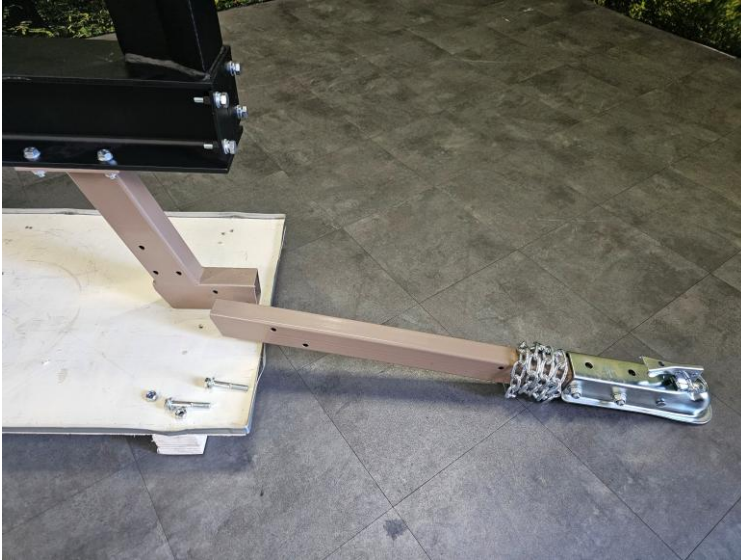
MISSING PARTS? CALL 725-274-6171 GX COMMERCIAL PARTS DEPT

STEP 3

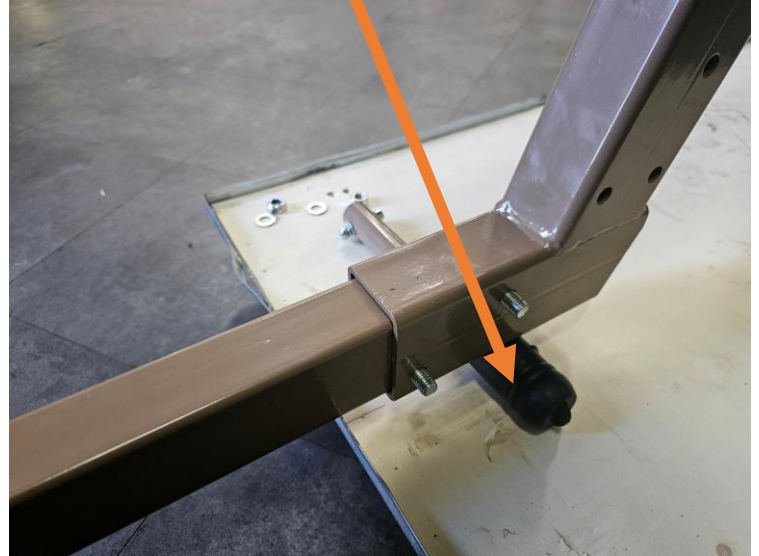
INSTALL TOW BAR

1. **PREPARE PARTS AND HARDWARE FOR THE TOW BAR**
2. **PLACE CONTROL HANDLE UNDER THE STAND TO RAISE IT OFF THE PALLET**
3. **RAISING WILL ALLOW THE BOLTS TO BE INSTALLED AND ALIGN WITH HOLES**

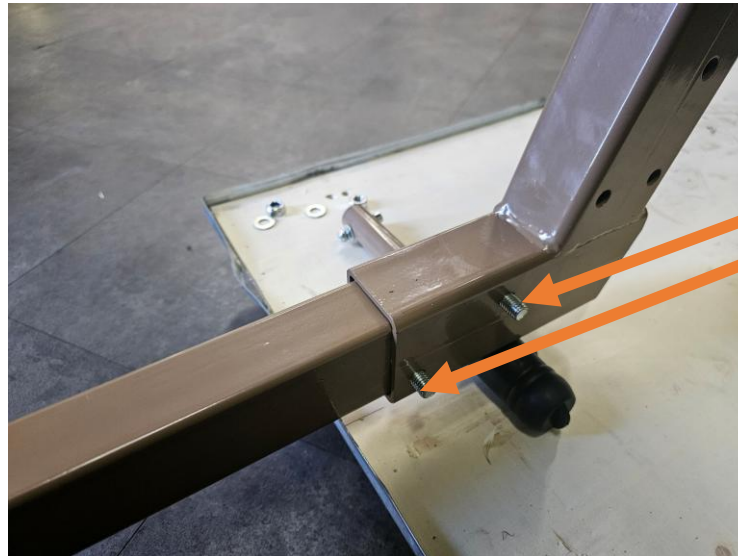
1



2



3



MISSING PARTS? CALL 725-274-6171 GX COMMERCIAL PARTS DEPT

STEP 4

INSTALL DROP STAND

1. **PREPARE PARTS AND HARDWARE**
2. **PLACE AS SHOWN AND BOLT WITH THE LANYARD BOLT**
3. **USE THE LANYARD BOLT AS SHOWN**
4. **LIFT THE SPLITTER AND LOWER THE KICK STAND**
5. **COMPLETE INSTALLING THE FRONT BOLT AND SPRING CLIP**

1



2



3



4



5



MISSING PARTS? CALL 725-274-6171 GX COMMERCIAL PARTS DEPT

STEP 5

INSTALL THE WHEELS

1. **TWO PEOPLE RECOMMENDED – LIFT AND SAFELY SUPPORT THE KICKSTAND**
2. **SLIDE WHEEL ON – ENSURE TAPERED END OF NUT IS FACING THE RIM HOLE**
3. **COMPLETE THE PROCESS FOR THE OTHER WHEEL AND LOWER THE UNIT**

1



2



3



STEP 6

INSTALL WORKTABLE

1. REMOVE THE PALLET
2. REMOVE AND PREPARE HARDWARE
3. SLIDE THE WORKTABLE INTO PLACE
4. INSTALL AND TIGHTEN THE MOUNTING HARDWARE

1



2



3



4



MISSING PARTS? CALL 725-274-6171 GX COMMERCIAL PARTS DEPT

STEP 7

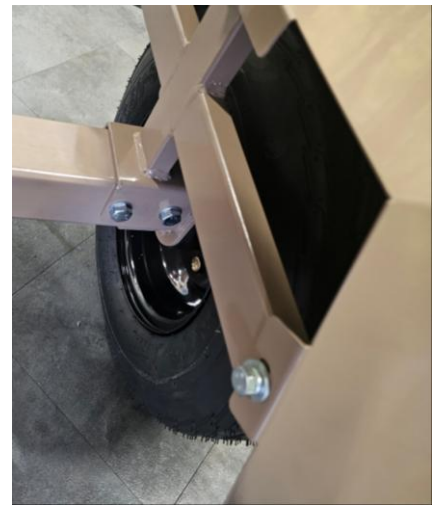
INSTALL FENDERS

1. MOUNT THE RIGHT FENDER AS SHOWN WITH HARDWARE
2. MOUNT THE LEFT FENDER AS SHOWN WITH HARDWARE

1



2



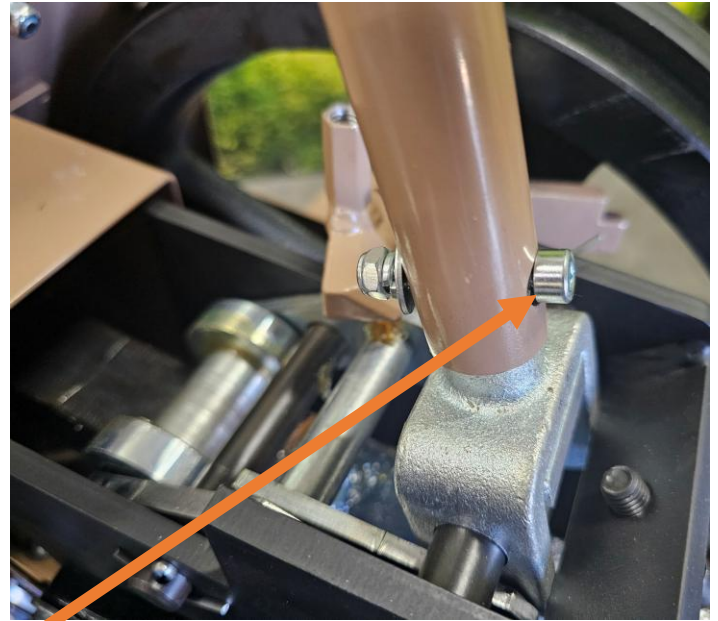
MISSING PARTS? CALL 725-274-6171 GX COMMERCIAL PARTS DEPT

STEP 8

INSTALL CONTROLS

1. MOUNT THE SPLITTER STICK – NOTE THE LARGE HOLE IS FORWARD
2. MOUNT THE SAFETY LOCK HANDLE AND LOCK NUT

1



**NOTE THE LARGE HOLE IN THE
STICK IS FORWARD**

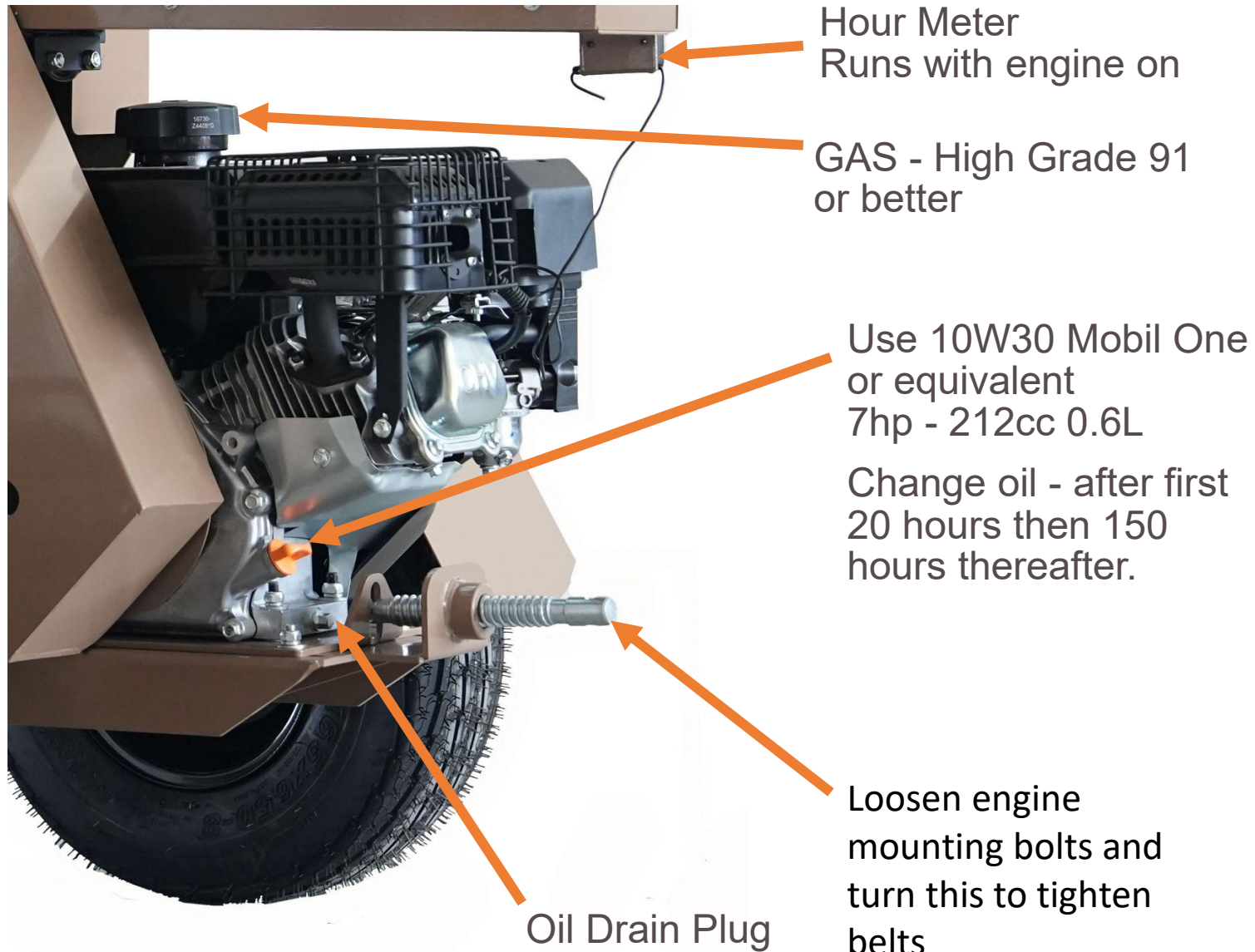
2



MISSING PARTS? CALL 725-274-6171 GX COMMERCIAL PARTS DEPT

STEP 8

ADDING GAS AND OIL



Your splitter has low oil protection.
Will not start if the oil is too low,
and will protect the engine

MISSING PARTS? CALL 725-274-6171 GX COMMERCIAL PARTS DEPT

STEP 9

YOUR SPLITTER WILL PROVIDE YEARS OF UNSTOPPABLE POWER IF MAINTAINED AND OPERATED PROPERLY. KEEP YOUR RACK GREASED. ALWAYS RUN AT THE HIGHEST RPM. DON'T EXCEED THE MACHINE'S SPLITTING CAPACITY.

1. Wear protective clothing, face, ear, eye, and glove protection at all times
2. Load log onto the splitter ram handling side of the log, never the ends.
3. Always stay clear of the splitter head. NEVER HAVE 2 PEOPLE RUNNING THE SPLITTER AT ONCE.
4. Other persons in the area should be clear of the machine when running
5. DO NOT GRIND THE SPLINE GEARS. BE QUICK ON THE HANDLE AND LET GO
6. Machine is designed for LOG SPLITTING ONLY.
7. Do not disable the 2-hand safety lever.
8. Do not exceed splitter capacity 20 inch dia and 22 long logs MAX.
9. Always stand at the side of the machine behind the split ram during splitting. This splitter is 1 sec fast, STAY OUT OF ITS WAY.
10. If you need to shut down the splitter flip the red engine shut off to OFF
11. Remember, the muffler is hot, don't lay your gloves on the muffler.
12. If the machine is not splitting a knot, don't force it and damage your splitter over 1 piece of wood.
13. Before you store your splitter, drain the gas, run it dry.
14. Check all hardware regularly as vibration may loosen hardware
- 15. NEVER START AND ALLOW OTHERS TO LOAD THE MACHINE WHILE ANOTHER PERSON OPERATES THE CONTROLS.**
- 16. TOW 45MPH MAX AND SLOW DOWN AROUND CORNERS**

MISSING PARTS? CALL 725-274-6171 GX COMMERCIAL PARTS DEPT

STARTING THE MACHINE

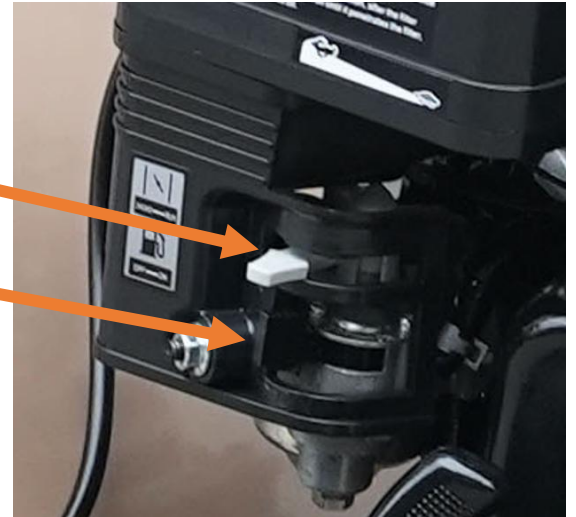
Great! Are you ready to start your engine? Before you do, please ensure that you've reviewed all the operations and safety guidelines on the previous page. If you haven't read them yet, take a moment to do so now. Let's get started safely! Make sure your oil level is full and that you have enough gas.

1. Turn the engine switch to ON



2. CHOKE IF COLD – turn off when starts

3. GAS ON



4. Set the throttle to full speed



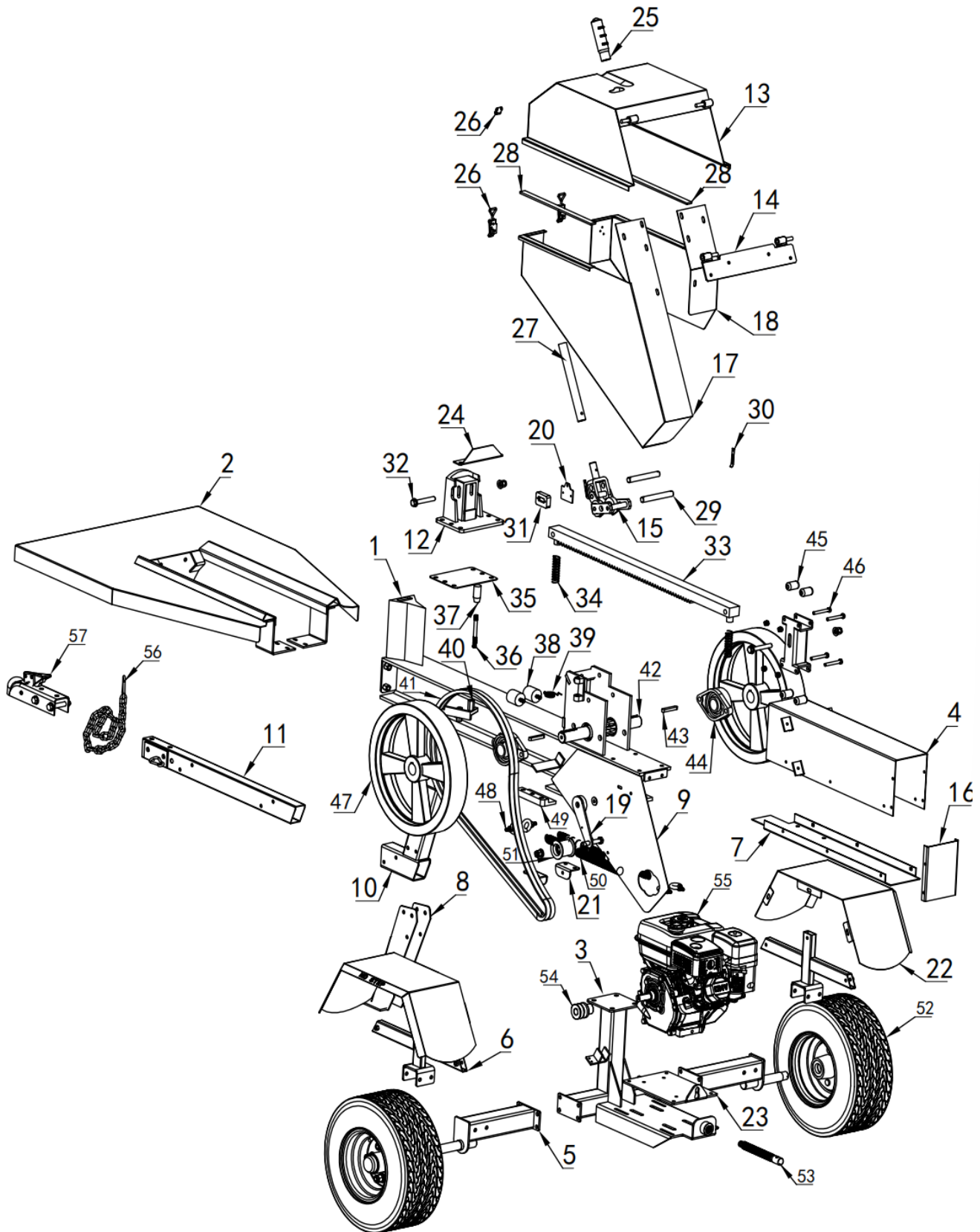
Follow the warnings and operation instructions printed on your machine.



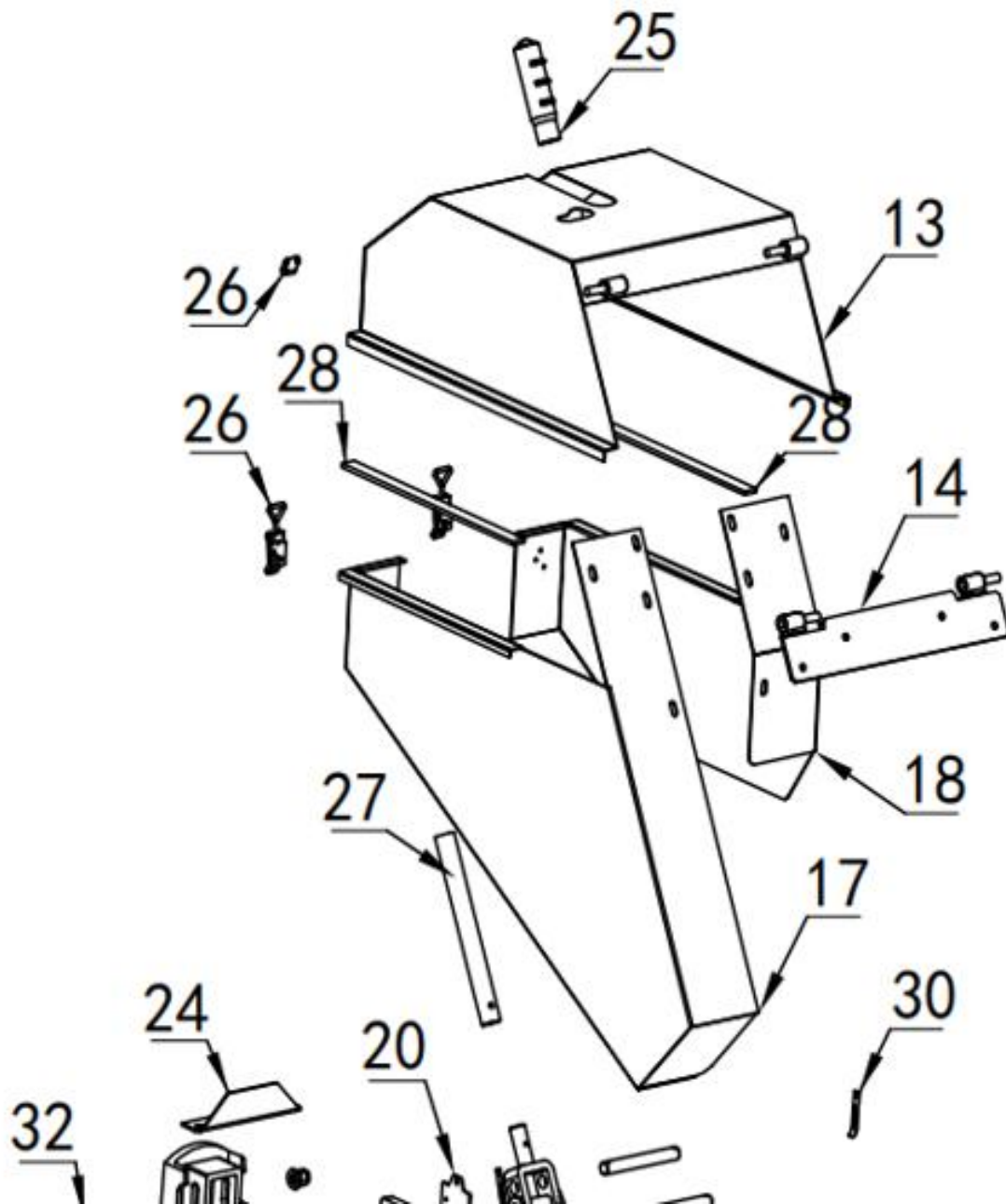
BBS434 PARTS LIST

ITEM NO	NAME		ITEM NO	NAME
1	Beam		30	Iron cable tie
2	work desk		31	hour meter
3	rear wheel rack		32	BoltM12*80 +Lock nut
4	Rack cover		33	Rack
5	wheel axle tube		34	Rack compression spring
6	fender frame		35	Geflon plate
7	Guide rail motion plate		36	small handle
8	front feet		37	M10 plastic handle
9	belt cover		38	Push block shock-absorbing rubber
10	trailer frame		39	torsional spring
11	tow bar		40	small switch
12	Push wood knife head		41	Belt
13	Top cover		42	gear shaft
14	top over fixing plate		43	flat key
15	Tigger		44	Bearing seat
16	Guide rail rear cover		45	Nylon small wheel
17	Main side cover		46	Bolt M8*60
18	Secondary side cover		47	Fly wheel
19	Tighten wheel frame		48	Pull ring
20	hours meter fix plate		49	Three-hole pressure block
21	tension spring		50	Push block return tension spring
22	fender		51	Nylon tensioning wheel
23	Engine plate		52	tire
24	Shock block impact plate		53	screw rod
25	handle rubber sleeve		54	small wheel
26	pressing buckle		55	Engine
27	handle		56	21 link chain
28	3M pad		57	Tow bar
29	Tigger Pin			

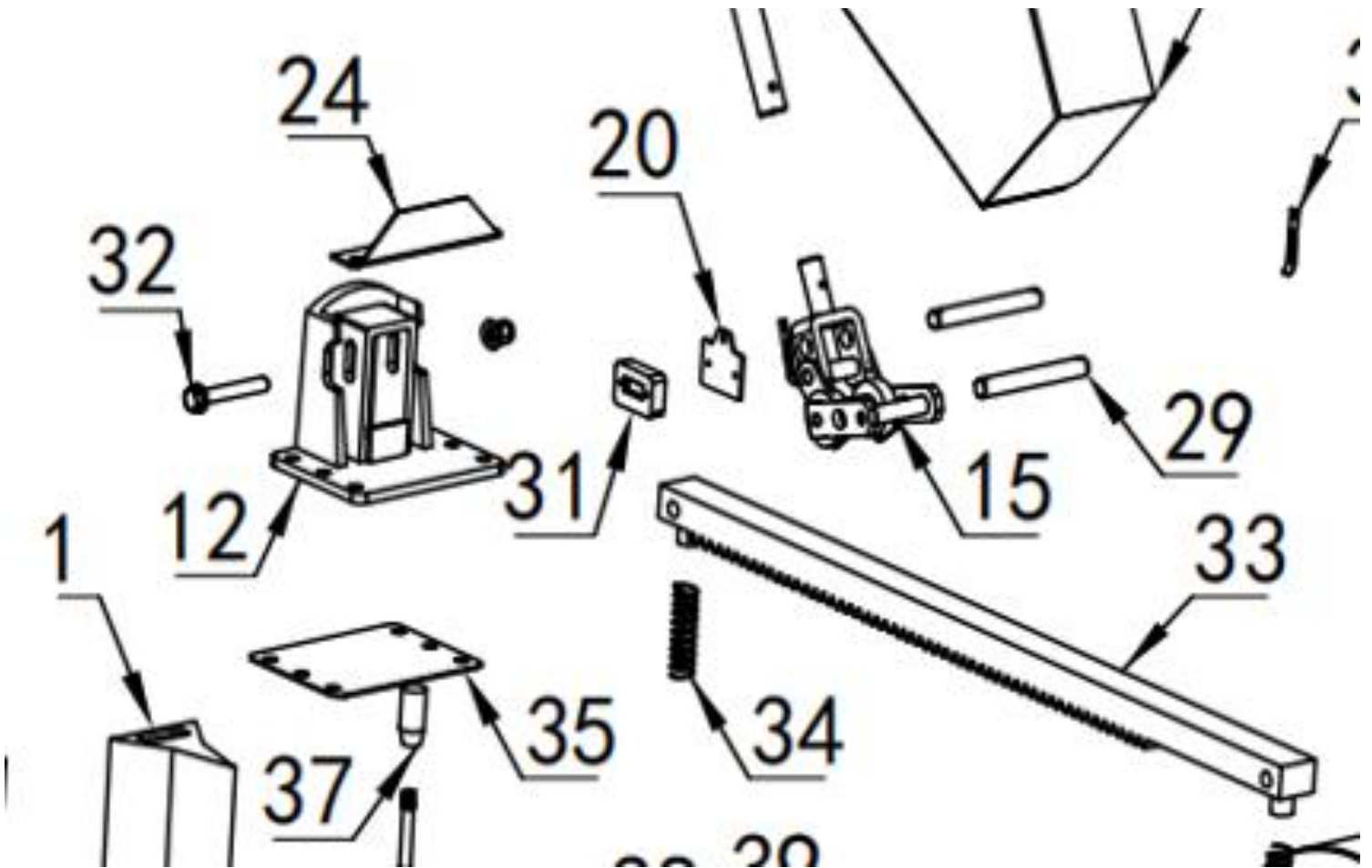
BBS434 PARTS DRAWING



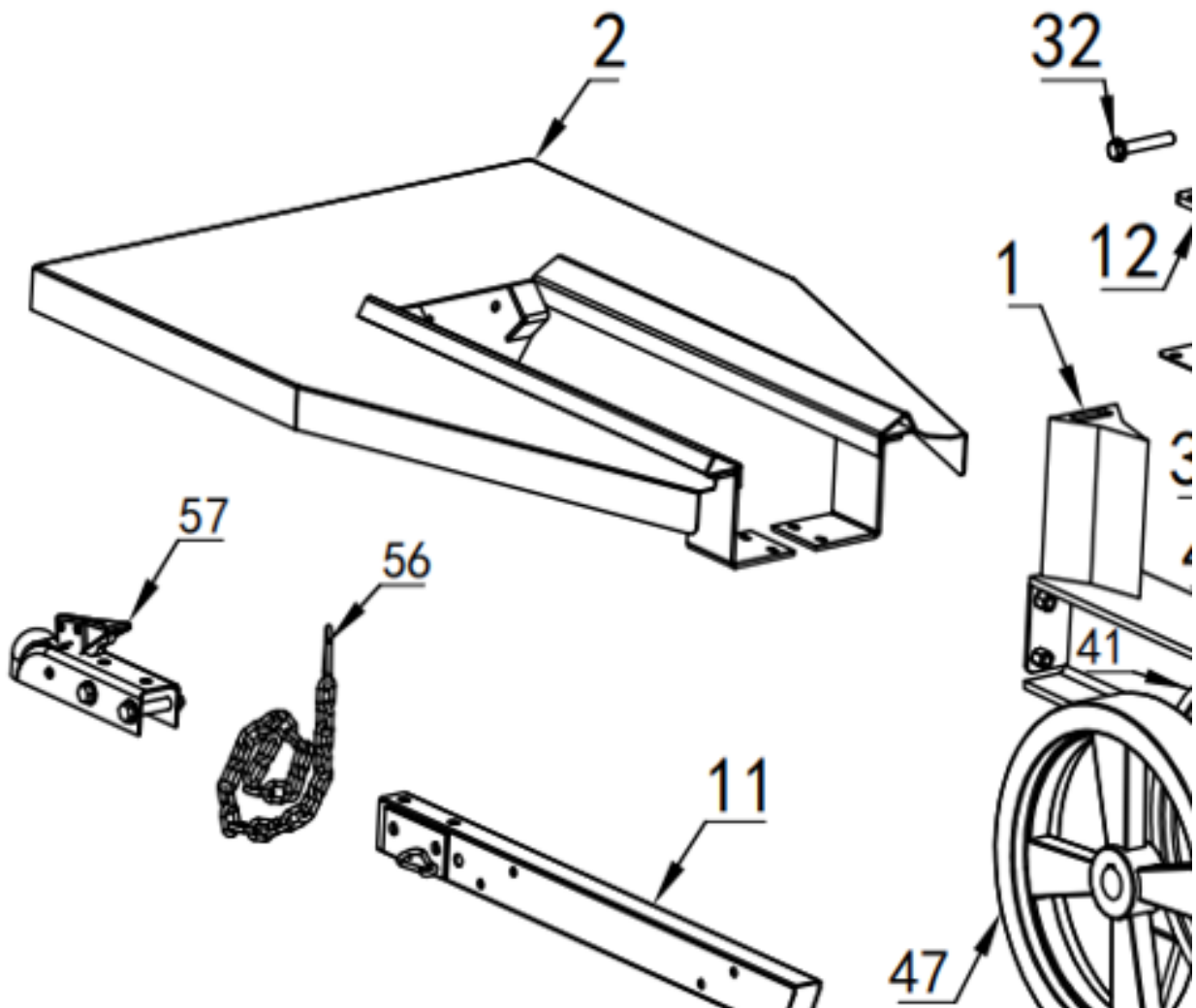
BBS434 PARTS DRAWING



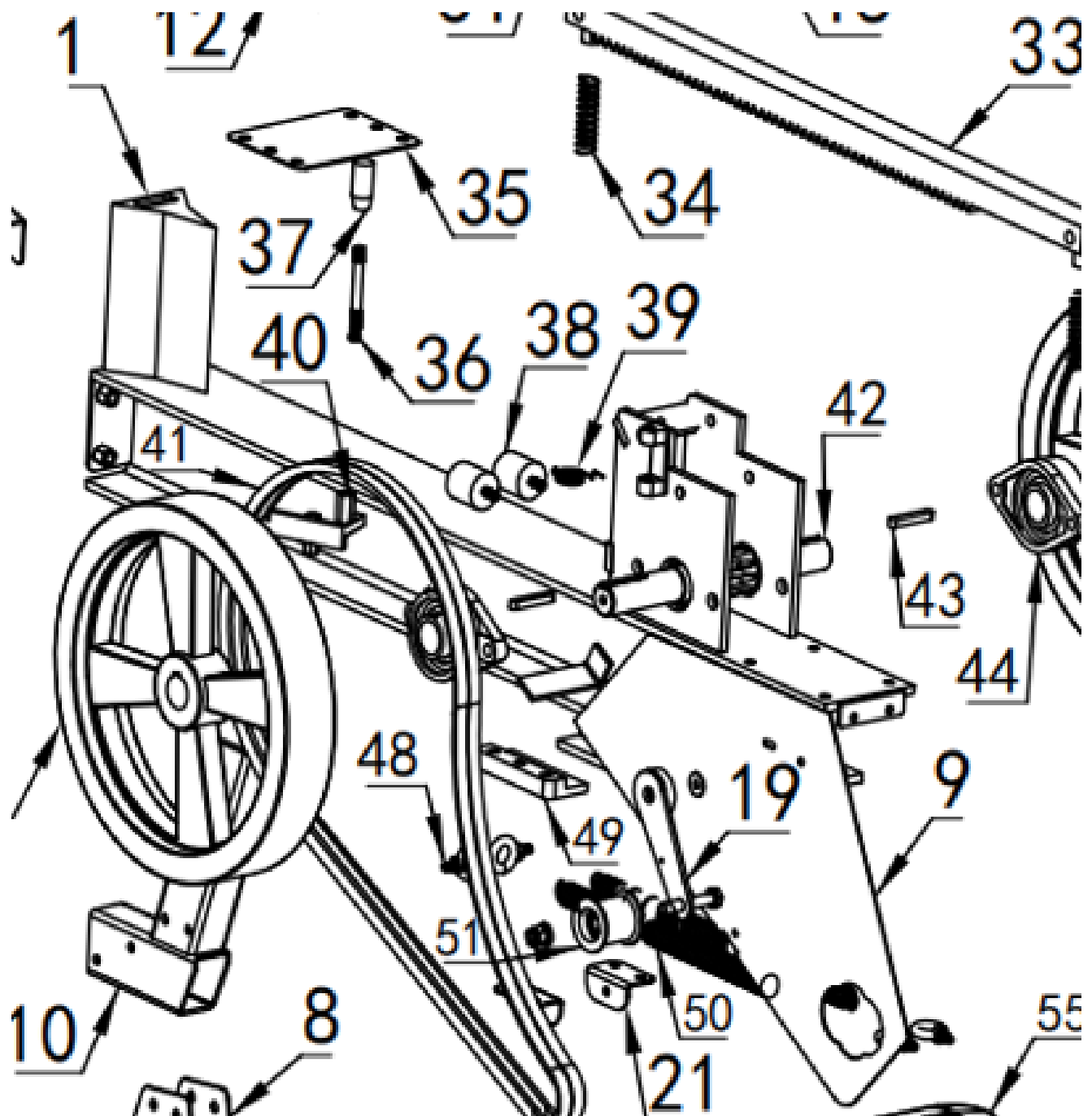
BBS434 PARTS DRAWING



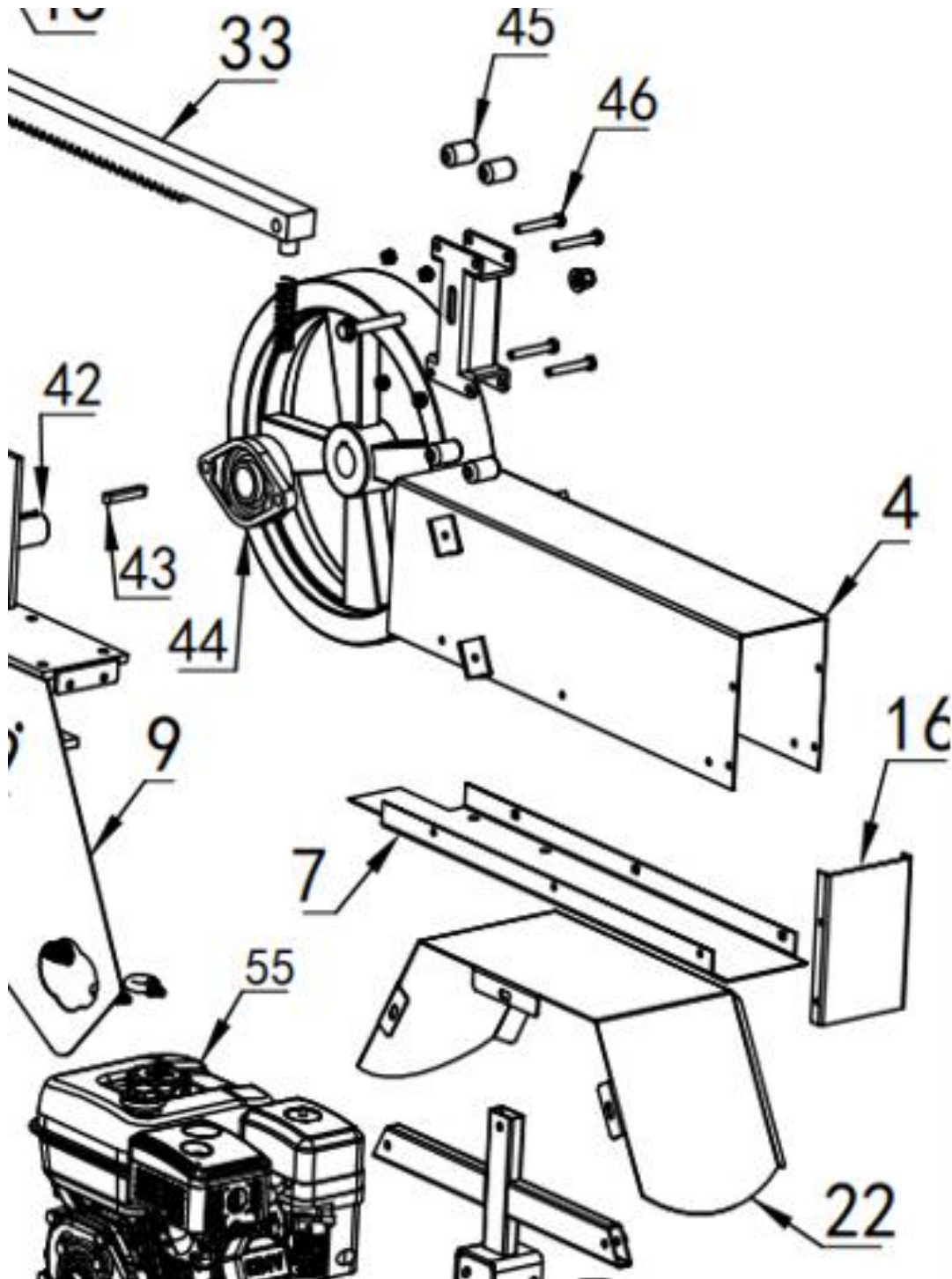
BBS434 PARTS DRAWING



BBS434 PARTS DRAWING



BBS434 PARTS DRAWING



This exploded view diagram illustrates the assembly of a motorized vehicle chassis. The central component is the engine (3), which is mounted on a frame (23). The frame includes a front support (54) and a rear support (55). The front support is connected to a front wheel assembly (5) via a steering mechanism (3). The rear support is connected to a rear wheel assembly (52) via a drive shaft (53). The front wheel assembly (5) includes a tire (5) and a hub (5). The rear wheel assembly (52) includes a tire (52) and a hub (52). The chassis is also equipped with a fuel tank (6) and a seat (22). The fuel tank is mounted on a bracket (8) and is connected to a fuel line (10). The seat is mounted on a bracket (8) and is connected to a seat belt (21). The diagram also shows various other components such as a handlebar (7), a throttle (49), a clutch (50), a brake (51), and a rearview mirror (53).



GX COMMERCIAL LLC
4301 S VALLEY VIEW BLVD, STE 10-11-12
LAS VEGAS, NV 89103

EXTENDED 5-YR LIMITED GAS-POWERED WARRANTY

Engines: Rato engines are 1 year warranty, a 4-year OEM commercial extended warranty is included at no extra cost. GX Commercial LLC will provide parts or replace Rato engines at our choice for **5 years from purchase date** at no cost to the original owner with proof of purchase receipt. The warranty is not transferable. All other engine brands are covered under their original OEM warranty.

Chassis: GX Commercial LLC will provide replacement parts to the original purchaser for 5 years for defective chassis components.

Not Covered under this warranty for Gas powered equipment: Tires, Cutting Blades, Cutting Teeth, Labor, Anvils, Belts, Hardware, 12V Batteries, wiring, damage, misuse, accessories, accepted shipping damage including minor scratch and dent.

EXTENDED HANDHELD ELECTRIC POWERED 2-YR LIMITED WARRANTY

Lithium handheld tools come with a 1-year warranty, plus a 1-year GX Commercial LLC extended warranty. GX Commercial LLC will provide parts or replace tools of our choice for **2 years from purchase date** to the original owner with proof of purchase receipt.

Not Covered under this warranty for Gas powered equipment: Tires, Cutting Blades, Cutting Teeth, Labor, Anvils, Belts, Hardware, Batteries, chargers, damage, misuse, accessories, accepted shipping damage, Products provided at no additional cost during marketing promotion giveaways are not covered.

Customer Service 725-274-6171 EXTENSION 1 PST 9-4 or WWW.GXcommercial.com

Revised 11-16-2025